


**WE
ARE**  **tempest**

Since 1998

A high-angle, slightly blurred photograph of a busy indoor hallway with a light-colored tiled floor. Several people are walking in different directions, their figures slightly out of focus to convey motion. In the upper right, a woman with dark curly hair, wearing a light blue button-down shirt and white shorts, is sitting on a low, light-colored bench or ledge against a wall. She is looking directly at the camera with a slight smile. A bright red square frame is superimposed over her, making her stand out from the busy background. To the left, a large glass window looks out onto a courtyard filled with white pebbles.

**ONE OF
THE MANY
OR
THE ONE
IN MANY?**

Based in India,
we are headquartered
in **Hyderabad** with branches
in **Pune and Bangalore.**

Our CORE PURPOSE

**Create Advertising
that will make peoples
lives better.**

VALUES WE LIVE BY

**Absolute transparency
with our employees,
clients and suppliers.**

**Importance to relationship
based on trust and mutual respect.**

Freedom to Innovate.



Our Real estate Clients



Our Services

MARKONE

BRAND ADVERTISING

DIGITAL DNA

DIGITAL MEDIA SERVICES

FAHRENHEIT

EVENT MANAGEMENT

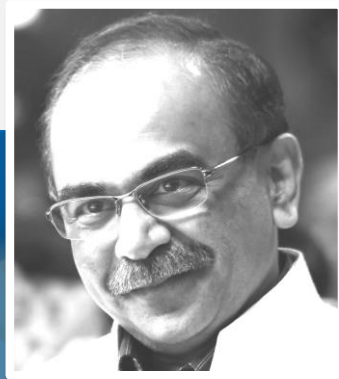
ASSETONE

HR BRANDING

SAMBANDH

CRM SERVICE

Our Team



TURAB LAKDAWALA

IIM-A graduate

MD & Founder

Began his career with Hindustan
Unilever

Super Specialist in Brand Planning

Past Experiences in Agriculture
and FMCG

A CRM pioneer since 1998



Rekha Oswal

General manager -

Operation

Marketing & Advertising post
graduate

Began her career with
CitiGroup

Been with Tempest since 2009,
she always gets the job done

Awards: 1 Best Employee, 1
Most Responsible & 1 Best
Branch

Our Team



Abhishek Jana

Business Head

12 years of experience in marketing & international business

Past Exp: Symrise (One of the world's largest F&F Company,

Worked with MNC's for product development across Asian countries

Past Clients: PEPSICO, NESTLE, INDIA/ SRILANKA/ BANGLADESH, DANONE, BACARDI, DABUR



Abhijeet Mankar

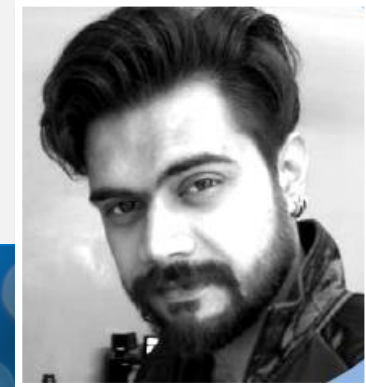
Creative Director- Art

12 + Years of Advertising expertise

Past Exp: Mudra, UTV, Purple Focus, Paradigm

Brands: Tata Motors, Bajaj Alliance, Nokia, Audi, Mitsubishi, RadioCity

Awards: 2 Abby's & Creative Director Of the year (2014)



Abhijeet Mehta

Creative Director-Copy

Associated with tempest for over 5 Years

Brands: Aditya Birla, Wipro BPO, Kirloskar, Eicher, Hathway

Created Multiple Path breaking Campaigns for MagarPatta, Skybay, Nanded City, Melange and more.

A Passionate Story teller, foodie and an aspiring Standup Comedien

The background of the slide is a photograph of an art gallery. A woman with long, curly red hair, wearing a black top hat, a black long-sleeved top, and a brown skirt, stands with her back to the camera, looking at a large, abstract painting on the wall. The painting is primarily yellow and orange. To the left and right of the main painting are smaller, colorful abstract artworks. The gallery has white walls and a dark floor. A large, semi-transparent grey rectangle is overlaid on the right side of the image, containing the title text.

SNAPSHOT OF OUR PORTFOLIO

Realty, OUR EXPERTISE

20 Years of Market Presence & catered to over 28 real estate corporates.

- MEGA PROJECTS INTEGRATED CITIES
- GATED COMMUNITIES
- STANDALONE PROJECTS
- COMMERCIAL PROJECTS
- RETIREMENT HOMES
- PLOTTING VENTURES
- CORPORATE IMAGE
- EXHIBITIONS

[illegible]

MEGA PROJECTS INTEGRATED CITIES



To succeed, we must first believe that

we can



We believed in success and we achieved it.
Today, Magarpatta City's success is leading to greater opportunities.

When we first started our journey, nobody believed that we could achieve success. Our dreams were too high, our project was not just innovative, but larger than life. But, above all, we will power to realize our dreams guided us to success and changed criticism and doubts to admiration. Today, Magarpatta City is 400 acres of remarkable reality. It is first of its kind evolutionary role model of India to pioneer a unique walk to home, walk to office lifestyle. Residents of Magarpatta City enjoy larger than life amenities like education and sports complexes, hospitals, banks, restaurants, fitness center and many more within the boundaries of the project. Our robust sustainable system has set an example towards creating and maintaining green environment. From ancient lifestyle to world class IT infrastructure there is everything that makes a complete world. Our success is very much evident from the global IT giants whose growth is empowered by SEZ at Magarpatta City. An ISO 9001:2000 Certified Company, Magarpatta City has also won the Govt. of Maharashtra's Best IT Infrastructure Award 2004. The company offers opportunity that fulfills your ambition to work on the projects of global stature. Here, your personal growth and progress is not restricted to tedious parameters, as you are involved in multi-level job profile, you are also given chance to choose your area of interest. This strategy not only helps company grow but also strengthens self-confidence and make work environment more interesting and vibrant. We are on our way to create many more huge projects based on Magarpatta City pattern. And for these ambitious growth plans, we require personnel for our Corporate Office, Site Office and Property Management Services. This is an opportunity to be a part of a new world.

● MAGARPATTA CITY CORPORATE OFFICE

CO-1: ACCOUNTS EXECUTIVE (M/F)

Candidate should be a Commerce Graduate / Inter CA / ICMA with minimum 3 years of experience in Accounts/ Finance. Knowledge of computerized accounting packages and command over English and Marathi is essential.

CO-2: COMPANY SECRETARY (F)

Candidate should be a member of the Institute of Company Secretaries of India. Freshers can also apply. Age limit : Upto 30 years.

CO-3: CUSTOMER SERVICE EXECUTIVES (M/F)

Fresh, bright, young graduates having excellent telephonic manners. Good communication skills with fluency in English, Hindi and Marathi are a must. Computer knowledge is essential. Age limit : Upto 30 years.

CO-4: SECRETARY TO MD (F) (1 post)

Bright, young graduates with Diploma in Secretarial Training, 2-3 years experience as secretary to top management personnel. Excellent communication skills with computer knowledge is a must.

CO-5: ADMIN. EXECUTIVE (M/F)

Bright, young graduates interested in day-to-day office administration along with computer knowledge. Fluency in English is a must. Candidates with a legal background or studying law will be preferred. Experience will be an added benefit, though not mandatory. Age limit: Upto 30 years.

CO-6: SALES/MARKETING EXECUTIVES (M/F)

Fresh, bright, young graduates with computer knowledge, excellent communication skills and good command over English, Marathi and Hindi is essential. Candidates with engineering background will be preferred.

● MAGARPATTA CITY SITE OFFICE

SO-1: CHIEF ENGINEERS (2 posts)

B.E. Civil Engineering with experience of minimum 20 years.

SO-2: PROJECT ENGINEERS (8 posts)

B.E. / Diploma in Civil Engineering with experience of minimum 15 years.

SO-3: SENIOR ENGINEERS (C&E) (15 posts)

B.E. Civil / Diploma in Civil Engineering, experience of minimum 8 years.

SO-4: JUNIOR ENGINEERS (C&E) (25 posts)

Diploma / Degree in Civil Engineering. Minimum experience of 2-3 years in Construction of Multi-storied Buildings/ Bangalore.

SO-5: QUANTITY SURVEYOR (1 post)

Diploma / Degree in Civil Engineering. Minimum experience of 10 years especially for Roads, Multi etc.

SO-6: TRAINING OFFICER (SECURITY)

Candidate should be an Army/Navy background or should have served in a reputed security agency as Training Officer. Experience 5-10 years. Age 30-35 years. Computer knowledge with good communication and interpersonal skills. Must be fluent in Marathi, English & Hindi.

SO-7: SECURITY OFFICER (Administration)

Candidate should be an Army/Navy background or should have served in a reputed security agency as security officer. Experience 5-10 years. Age 30-35. Computer knowledge with good communication and interpersonal skills. Must be fluent in Marathi, English & Hindi.

● PROPERTY MANAGEMENT SERVICES

PMS-1: OFFICE ASSISTANT (2 posts)

Male, Female graduate with 2-3 years experience as Office Assistant. Computer knowledge is essential.

PMS-2: HOUSE KEEPING SUPERVISOR (Residential & Commercial) (2 posts)

Candidate should be graduate / diploma holders with experience in house keeping. Command over Hindi, English & Marathi preferable.

For technical personnel, knowledge of ISO and computers shall be an added advantage.
Candidates who have applied before need not apply again.



The Company offers excellent remuneration and opportunity for growth. Interested candidates must specify position code. Attach passport size photograph. Send contact number. Resumes must be sent within 7 days to The Chief Operating Officer, Magarpatta Township Development and Construction Company Limited, MegaSpace, 13, Sholapur Bazaar Road, Off East Street, Pune - 411 001.

MID-DAY ad size 25cm (w) x 35cm (h)

We Built Magarpatta City



The first generation farmers of Magarpatta City

It is existing and functional. See it to believe it.

Core integrated township built by 120 farmer families isn't a miracle. Magarpatta City is the result of sheer hard work, perseverance and some seemingly impossible dreams.

Magarpatta City, built on the eco-friendly concept of Sustainable Development, is a landmark project for contemporary India. The integrated township to blue chip big wigs from across the world and thousands of

families, living in the finest homes. Being the complete city it is, inhabitants of Magarpatta City have discovered a new way of life. They walk to work, walk to school, walk to play - a unique urban revolution in today's age and time.

As we look back at our achievements with pride and joy, we also take a pledge to strive in search for a greater excellence. It's only the start of the "Movement called Magarpatta City."



Lush green internal roads



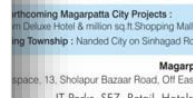
Well designed residential neighbourhoods



City Public School has classes from KG to std. XII



Zone, the lush green, pure and fresh path



upcoming Magarpatta City Projects : 1. Deluxe Hotel & million sq.ft. Shopping Mall 2. Shopping Township : Nanded City on Sinhagad Road



3rd December, 1999 - 2007

Every farmer of Magarpatta village is today a part of Magarpatta City. The farmers continue to receive part of the income that Magarpatta City generates. Thus ensuring that the fruits of development, rising income and pride of achievement is shared by all proportionately, in what is truly "Inclusive Development" - a concept that will be spread by Magarpatta City in future ventures, in Pune and around the country.



Featured as the role model for 'Inclusive Development' on BBC, CNBC, Discovery, NDTV, CNN IBN, Sahara Samay, Star TV, Doordarshan and in all leading Publications.



Cybercity Magarpatta, home to software giants



Deccan Harvest, the multi-cuisine restaurant



Noble Hospital with impeccable treatment & care facilities



Gyrfishana with Olympic size swimming pool

Winner of the 'Best IT Infrastructure Award' from Govt. of Maharashtra.

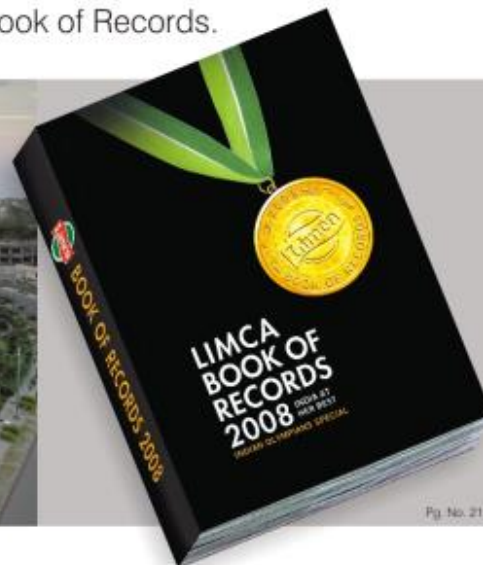


LEGAL ADVISORS : Chandan M. Pawar - Associates CHARTERED ACCOUNTANTS : D.R. Barve & Company SERVICE PROVIDERS : BSNL, VSNL & Airtel
GOVERNMENT OF INDIA : Ministry of Information Technology, Ministry of Commerce & Industry, GOVERNMENT OF MAHARASHTRA, Pune Municipal Corporation, MSEDC Ltd., STPI



Most Admired. Most Appreciated and Most Awarded
integrated township of India.

Now enters into the Limca Book of Records.



Pg. No. 211/212

Largest Energy Saving Project by a single entity.

We are proud to inform you that Magarpatta City enters the Limca Book of Records,
for its solar water heating system, heating 4,28,750 litres* of water per day and saving 7 million electrical units.

Appreciating our **Green Efforts**, the Pune Municipal Corporation has offered **10% Discount on Property Tax** to property owners of Magarpatta City.
So what are you waiting for? Come be a part of Magarpatta City.

Welcome to 400 acres of remarkable reality called Magarpatta City - an integrated township. An award winning fully functional city. Admired by world renowned leaders.



Call: 26823960 E-mail: mgcity@vsnl.net Visit us at: www.magarpattacity.com IT Parks, SEZ, Retail, Health Care, Hospitality, Education Campuses, Sports Complexes & **WE ALSO BUILD HOMES**

Bookings Open !



700 ACRE CITY. OUR CLIENT SINCE 2009

THE CHALLENGE

The project on Sinhagad road & Nanded city not being a popular location amongst Hinjawadi, Magarpatta and other upcoming areas.

THE SOLUTION

To create a big bang by bringing out the largeness of 700 acres & positioning it as a **changing face of Sinhagad road**

THE OBJECTIVE

To highlight Nanded city as an upcoming township of 700 acres

THE RESULT

1000 + ENQUIRIES
Delivered 7000 apartments |
95 towers | 6 neighborhoods
yet to come



Why merely observe this Maximum Change,
when you can Partner it!

Change at its maximum best. This change is not superficial. Neither is it a temporary burst. On the contrary, it is a deep rooted & futuristic movement, grounded on trust and transparency. Don't just stand by and watch. Embrace this vibrant lifestyle and arrive on the fast track of growth.

Be the change you want to see!

Launch Campaign

Change is future
A change that changes everything forever

Change is inspiring
A change that changes the way we see

Change is inevitable
A change that touches everyone

Change is progress
A change that takes us ahead of our times

Change is positive
A change that changes the way we think

Change is inspiring
A change that changes the way we see

EXPERIENCE

CHANGE

Change is positive
A change that changes the way we think

Change is future
A change that changes everything forever

Change is essence of life
A change that changes the way we live

Change is inevitable
A change that touches everyone

Change is positive
A change that changes the way we think



The change you want to see, is here! Come, See & Experience...
For more details refer to center spread page.



Why merely observe this Maximum Change,
when you can Partner it!

Change at its maximum best. This change is not superficial. Neither is it a temporary burst.
On the contrary, it is a deep rooted & futuristic movement, grounded on trust and transparency.
Don't just stand-by and watch. Embrace this vibrant lifestyle and arrive on the fast track of growth.

Be the change you want to see!

Change

Change is inspiring
The best change often starts as one simple thought.

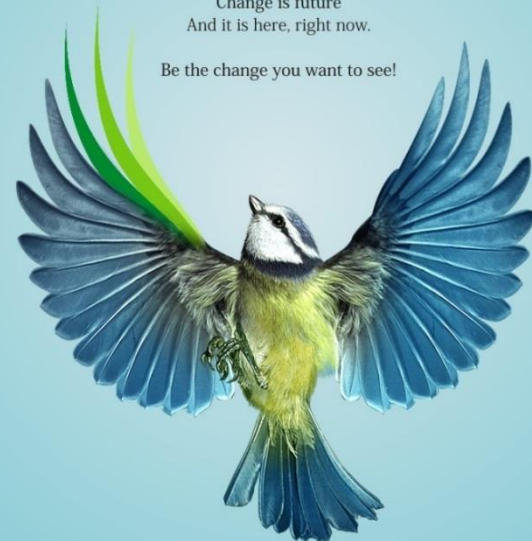
Change is positive
It brings an enduring transformation.

Change is progress
The smallest decision can make the biggest difference.

Change is inevitable
The sooner we open up to it, the better.

Change is the essence of life
If we don't change, we don't grow.

Change is future
And it is here, right now.
Be the change you want to see!





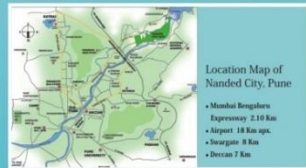
Master Plan of Nanded City



This Change promises Maximum Transformation!

Magarpatta City was a turning point in the lives of Puneites. Their life became more beautiful, meaningful and peaceful. Now history is being repeated at the 700 acre Nanded City, Pune - The Maximum City. Take your pick from a range of apartments, penthouses, bungalows & villas and your life will change forever. This change is sure to be vibrant, progressive and empowering because it is in tune with the present and connected to the future. And it is all set to bring a joyful transformation in the life of every family

residing at Nanded City, Pune. Nanded City, Pune will add to your life in more ways than one. 'Walk to Work' and 'Walk to Home' lifestyle will facilitate effective time management. The Greenery will refresh your body, mind and soul. From now on you will wait for the wonderful and entertaining weekends. Be a citizen of The Maximum City and welcome home maximum prosperity, maximum lifestyle and maximum joy!



Location Map of Nanded City, Pune

• Mumbai Bypass
• Expressway 2.10 Km
• Airport 18 Km approx.
• Inaugurate 8 Km
• Decan 7 Km



Nanded City Development & Construction Company Limited
Site Office: Nanded City, Sinhgad Road, Pune. Tel: 020-24391222 / 23 / 24 / 25 / 26 E-mail: sales@nandedcitypune.com URL: www.nandedcitypune.com
Corporate Office: Megapace, 13, Shopapour Bazar Road, Off East Street, Pune - 411 001, India. Tel: 020-26342797, 26341940 Fax: 020-26345541



Pune has changed...



The only fully functional 430 acre privately managed integrated township.



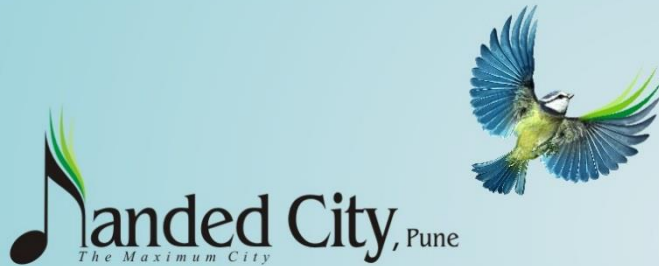
Pune has experienced countless changes and has enriched itself by absorbing them. This knowledge hub has extended into an IT hub. It is a paradise for pensioners and youth alike. Industrial empires and artistic endeavours co-exist here in perfect harmony. Pune preserves culture and welcomes modernity. It respects values and facilitates professionalism. Here 'old' is gold and 'new' is celebrated. Today, Pune stands on a turning point of progress, prosperity and globalization. It has been a trailblazing process of development and Magarpatta City is our contribution towards it. We are proud to have done our bit!

430 acre Magarpatta City, a towering achievement in Pune's real estate!

- Privately managed integrated township, a socially committed complete community
 - Happy families residing in 7,500 homes, employment opportunities for more than 60,000
 - Walk to work and walk to home experience for the first time in India
 - Natural beauty, educational and sports complexes, banks, restaurants, fitness centers and IT hubs in one integrated community
 - 120 acres of greenery
 - 40 % energy saving, water harvesting, solar water heaters, vermiculture, solid waste management
 - Round the clock multi-layered security system including CCTV, ambulance and medical facilities
 - Educational facility up to management level
 - Retail space, recreational facilities, food court, restaurants & gymnasium
 - A multi speciality hospital
 - Health check up camps, literacy programmes for construction workers, vaccination, day care and hostel for their children
 - Financial assistance to mentally challenged children through purchasing the decoration items made by them
 - Blood donation camps
- This unbelievable and unparalleled positive change has earned us what we value most, the unshakable trust of the Puneites. Pune is still changing and another dimension of this change is also shaping up.

If you are a true blue Puneite, come and partner this change!





700 acres of Dreams, Vision and Success.



235 farmer families nurtured a dream and resolved to turn it into a reality. Imagination was unleashed, action was initiated and an epic was born - Nanded City, Pune. You placed your trust in our dream. We are striving to match up to it by working ceaselessly to realize this vision. With the firm foundation of your trust and our commitment, we are creating 'The Maximum City' on 700 acres of land.

Maximum Thought

An all-encompassing thought has gone into this creation. We have seriously thought about your aspirations, the quality of your family life, about environment and how we should co-exist in perfect harmony with it. We have thought about what roots mean to wings. In this huge endeavor, we are committed to cherish humanity. This integrated and honest thought has turned Nanded City, Pune into 'The Maximum City' blessed with natural beauty and best in class amenities.

5.2 kms of river frontage



13200 trees and more to be planted

Maximum Nature

Sprawling lawns, flower laden bushes, gardens, Eco Park, rustling trees, chirping birds, nature cure center, huge playgrounds, proximity to Khadakwada, Panshet, Sinhgad, Mulshi, Bhutghar, Varangan dams, river frontage and pollution free southeast breeze throughout the year. All these combine to create a never before, natural environment. Only in Nanded City, Pune - The Maximum City!

Maximum Lifestyle

Health, happiness, harmony, freedom, entertainment, security, leisure, enrichment and bliss, all this and much more has defined the unique lifestyle at Nanded City, Pune. A Sports Center, Jogging Track, Parks, Bus Terminus, Hospital, Fire Station, Shopping Center, Library, Police Station and many more amenities are adding style and substance to 'The Maximum City'.

25 kms of backwaters for cool and natural breeze



200 acres of lush greenery

Maximum Eco-friendliness

Original natural glory will not only be retained but enhanced at Nanded City, Pune. Riverbed & riverside developments, sustainable energy systems such as Rainwater Harvesting, Bio-gas Plant, Vermiculture and Solar Water Heating will be consistently used, making 'The Maximum City' truly eco-friendly.

Maximum Opportunities

Nanded City, Pune will house state-of-the-art Commercial, Business, Recreational and Institutional Zone comprised of IT Park, Animation & Gaming Zone, Offices, Corporate Offices, Showrooms, Hyper Markets, Multiplex, Mall, Theme Restaurants, Star Hotels and many more prestigious facilities. The Maximum City' will be laden with an array of growth opportunities.

Nanded City, Pune - The Maximum City in tune with nature.

- 200 acres of lush greenery
- 5.2 kms of river frontage
- Wide & Well-planned 6 lane roads
- 13,200 trees and more to be planted
- 25 kms of backwaters for cool and natural breeze

बदल अनुभवा



बदल घडलाय. निश्चितपणे घडलाय. सर्वांची मनं आणि मतं जाणून घेत, प्रत्येकाला सामावून घेत पुढे चाललाय. बदल वाढतोय, उंचीवर जातोय. मातीत रुजतोय. हिरवाईत बहरतोय. दिलेली वचनं तो कटिबद्धतेनं पाळतोय. आणि हे सारं तो करतोय शांतपणे, आत्मविश्वासाने आणि मुख्य म्हणजे मॅक्सिमम् वेगाने. या, पाहा, अनुभवा हा बदल.



700 ACRE CITY. OUR CLIENT SINCE 2009

THE CHALLENGE

To generate enquiries from Magarpatta and near by premises for Nanded city

THE OBJECTIVE

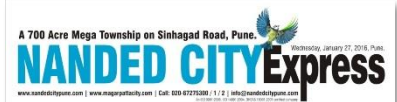
To highlight why the 700 acre township is a smart investment opportunity

THE SOLUTION

Instead of giving a print ad we created a tabloid with the same look and feel to give each and every unique detail of the project. This was distributed at Magarpatta, seasons , noble hospital and other surrounding areas

THE RESULT

100+ ENQUIRIES



It is all in the Nanded City, Pune has opened a whole new world of opportunities where you can invest a lifetime and have a smart decision. The Nanded City is a smart decision. Smart Citizen.



The Nanded City Tabloid

A 700 Acre Mega Township on Sinhadag Road, Pune.

NANDED CITY Express

www.nandedcitypune.com | www.magarpatnacity.com | Call: 020-67275300 / 1 / 2 | info@nandedcitypune.com

Wednesday, January 27, 2016, Pune.



Smart Decision. Smart Citizen.

A 700 Acre Mega Township on Sinhadag Road, Pune.

You, along with 7000 other families, who reside in 95 towers comprising of 3000 apartments are the only families residing on Sinhadag Road who are enjoying the benefits of Nanded City, Pune, with Sargam and Pancham - our two new launched neighbourhoods, you will find more like-minded individuals sharing the perks with you. With an internationally acclaimed model of self-sustainable development, Nanded City, Pune was accepted when 235 farmer families came together to form a 700 acre privately managed, mega integrated township on Sinhadag Road. The idea behind Nanded City, Pune was to carry the rich legacy of Magarpatta City forward and provide living spaces that use different technologies and services and enhance the quality of living while reducing costs and resource consumption. We pass this idea to you and handover the concept of wholesome living in this mega township. We thank you for the trust you have bestowed upon Nanded City, Pune and we are sure you know that this has been a smart move and a smart investment for your future.



It is all in the address!

Nanded City, Pune has opened a range of opportunities where you can expect a wholesome life just like Magarpatta city, only bigger with more add ons, like the enhanced shopping complex CBSE & ICSE board schools, IT park that is spread across 7 million sq. ft and will provide job opportunities to more than 50,000 employees in the future. The Eco Park and Oxygen Zones have been designed to make you experience a pollution free environment.

Symphony
IT Park

7 million sq. ft
50,000 Job Opportunities

Just like Cybercity in Magarpatta City but much larger in size - you will soon find Symphony IT Park in Nanded City, Pune which will be the future of Information Technology parks.

Get
P
5
lakh
Carry

3 | NANDED CITY Express

Wednesday, January 27, 2016, Pune | www.nandedcitypune.com | www.magarpatnacity.com | Call: 020-67275300 / 1 / 2

ECO FRIENDLY ADVANTAGE

Only at Nanded City, Pune

Eco Park & Oxygen Zone

We, at Nanded City, Pune believe that a well grown tree gives oxygen, saves soil fertility & soil erosion, controls air pollution, provides shelter and food for birds and animals and also gives flowers, fruits & rain. We have already planted more than 13,200 trees and have also converted the natural features of this place, like the stream running through the site into an Eco park. There is this Mangir Baba Nallah that carries water from surrounding village area and passes through Nanded City, Pune. We have created an Eco Park along it by treating the water stream through a combination of root zone & culture treatment.

Urban Agriculture:

The concept of Urban Agriculture has also been introduced in Nanded City, Pune wherein organic vegetables are cultivated and sold to the residents. We have also developed the riverside area and have been growing vegetables in the vicinity. The restoration of riverside belts have resulted in an increasing number of flora surrounding it. This self sustainable model and the concept of urban agriculture make Nanded City,

Pune one of the most environment friendly places in town.

Riverside Frontage:

The serene views of the river keep you refreshed and rejuvenated. Riverside area is kept exclusively for green development. As we carry on with the developments during phase one, it will become a strolling park. The river frontage and the backwaters make a picturesque locale. Also, because of its location, Nanded City, Pune tends to get more foggy and misty most of the year.

Soil Management:

At Nanded City, Pune we have embarked Gabion wall and Gabion mattresses along riverside to arrest surface runoff, prevent erosion of soil and scoring of the river bank. We have also established plantation along the riverside for river bank localization.

Waste Management:

We, at Nanded City, Pune promote the residents to segregate domestic waste at source. This helps us to



effectively recycle solid waste. We also have a strong system for recycling Non-biodegradable waste.

Biogas:

The construction of biogas Plant is also complete. It is the most eco-friendly manner to treat solid biodegradable waste. The biogas generated through this is being used to produce electricity which is used for area lighting. The water that is used for landscaping here is STP water.



Urban Agriculture



Oxygen Zone



Eco Park

2 | NANDED CITY Express

Wednesday, January 27, 2016, Pune | www.nandedcitypune.com | www.magarpatnacity.com | Call: 020-67275300 / 1 / 2

Experience community living like nowhere else.

Where families from all the communities come together to celebrate festivals, where days of national importance are celebrated together, where there is a sense of belonging and attachment, where senior citizens can spend time together, where like-minded individuals can share their thoughts and exchange ideas, where children have their own space to grow up, community-living experience like this is hard to find anywhere else but in Nanded City, Pune.

Navratri Utsav 2015



Deep Mohatsav 2015



Independence Day 2015



Senior Citizen & Police Meet



Ganesh Utsav 2015



THE CHALLENGE

Every other builder in Hinjawadi was harping on the location of Hinjawadi

THE SOLUTION

A disruptive illustration was created to depict the ease & convenience of the location

THE OBJECTIVE

To highlight the location feature in a clutter breaking way

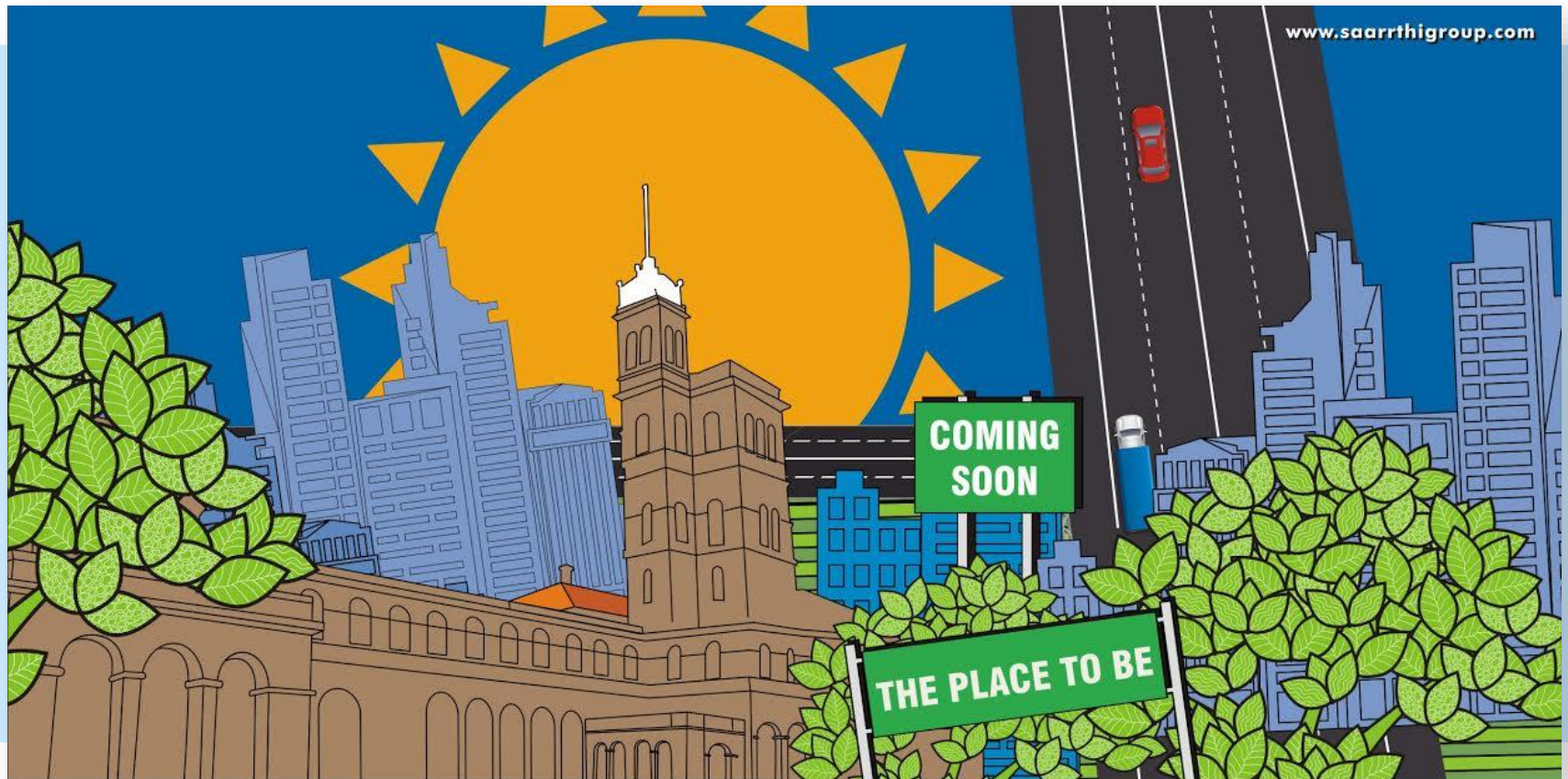
THE RESULT

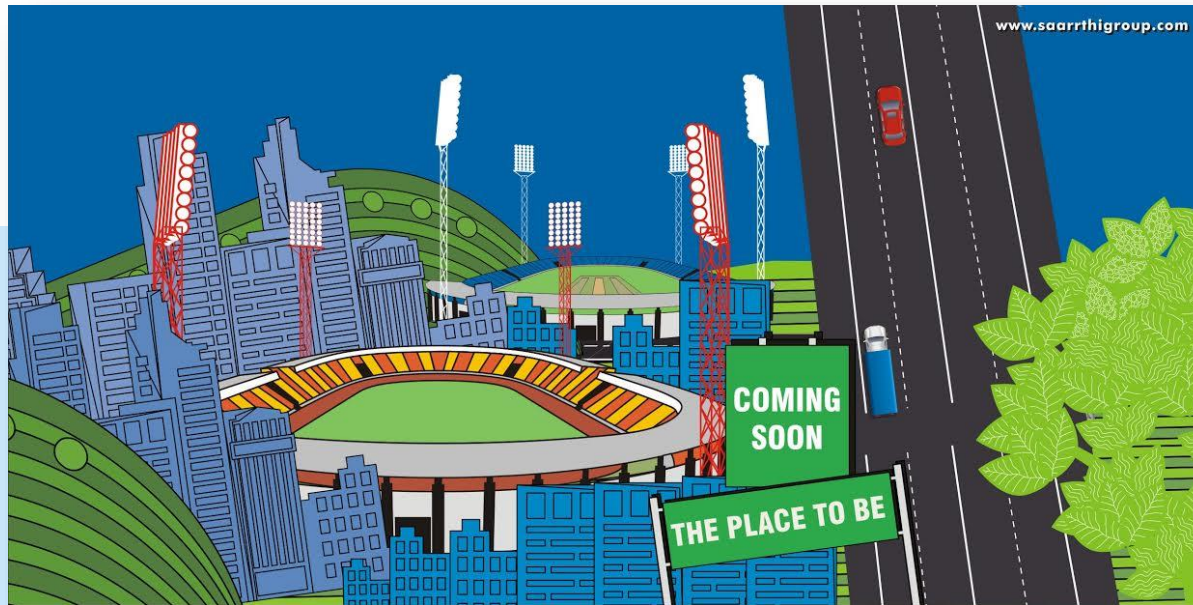
750+ ENQUIRIES



Launch CAMPAIGN- The place to be

Launch teasers





Launch Reveal

www.saarrthigroup.com

Hinjawadi
Wakad
Mumbai

THE PLACE THAT HAS THE IT FACTOR

SAARRTHI
Skybay
The Place To Be
1, 2 & 3 BHK cosmo-apartments
Mhalunge

SAARRTHI™
Exceeding Excellence
AN ISO 9001:2008 COMPANY

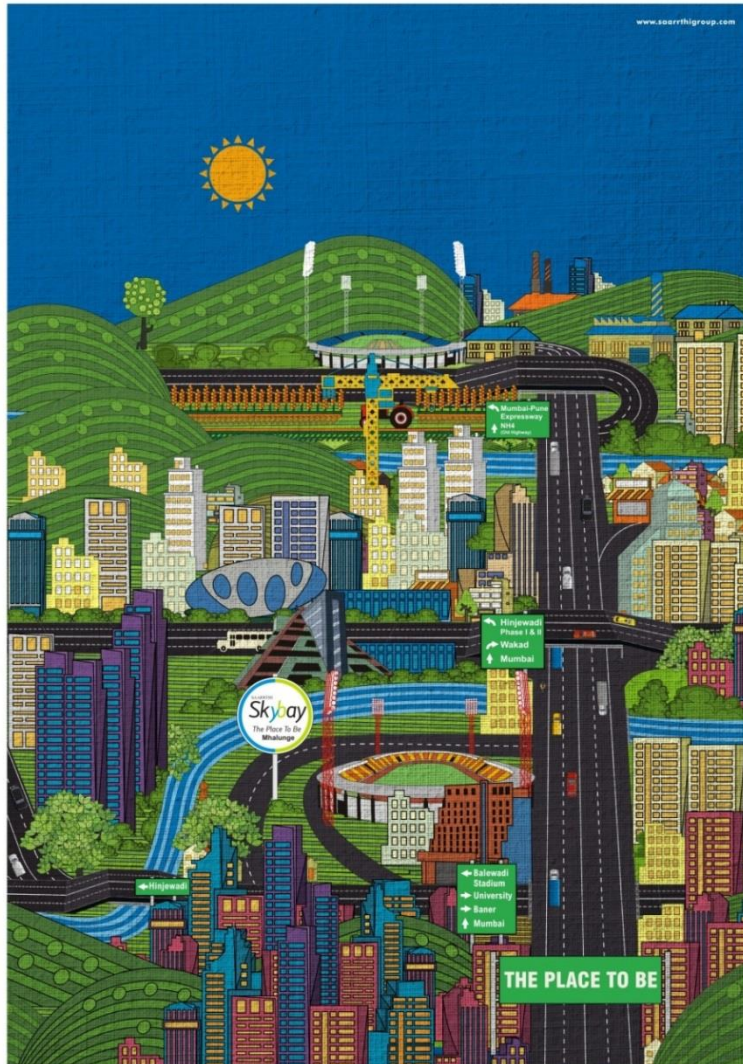
Site: S. No. 60/1 & S. No. 4 (Part), Near Hotel Holiday In,
Behind Balewadi Stadium, Mhalunge, Tal. Mulshi, Pune.
Call: 020 2563 1161 / 9595 123 123
Email: sales@saarrthigroup.com

Launch Reveal



THE TIMES OF INDIA

INCLUDES OF PUNE TIMES AVAILABLE ONLY IN PUNE CITY, PUNE AREA & PUNE DISTRICT AND TISS PROPERTY



Launching Today

www.saarrthigroup.com

SAARRTHI
Skybay
The Place To Be



1, 2 & 3 BHK cosmo-apartments at Mhalunge, Pune.

Spread across 12 acres of sprawling space, Saarrthi Skybay is exquisitely located at Mhalunge, one of the fastest growing extensions of Pune. Housing 963 apartments in these seven sky-scrapers, Saarrthi Skybay has all the elements of a cosmopolitan lifestyle with the best of amenities & specifications under its name. Touted as the next favourite destination of Pune, Saarrthi Skybay at Mhalunge is an ideal place to be in terms of connectivity, convenience and cosmopolitan lifestyle. Visit once and see for yourself.

Highlights • Spread across 12 acres, overlooking water-body • Mhalunge - The new destination for cosmo-lifestyle • Easily accessible from Baner, Pashan, Aundh, Bavdhan, Hinjewadi & University Circle • Close to Mumbai-Bangalore Highway and Mumbai-Pune Expressway • Equipped with premium amenities & specification
Hotspots nearby • Hotels & Restaurants • IT Hubs & major commercial centres • Schools, Colleges & Educational Institutes • Entertainment avenues like clubs & resorts • Stadium

SAARRTHI
Special 26
Pay just Rs. 2.5 Lakh and own a flat here!
Offer valid for first 26 customers only

1 BHK - 41.5 Lakh' 2 BHK - 56.5 Lakh' 3 BHK - 87.5 Lakh'

SAARRTHI
Exceeding Excellence
AN ISO 9001:2008 COMPANY

Site: Near Hotel Holiday Inn, Behind Balewadi Stadium, Mhalunge, Pune.

Email: sales@saarrthigroup.com

Call: 020 2563 1161 / 9595 123 123

CREDIT

SAARRTHI

f

SITE BRANDING



THE LONER OR THE LEADER?





Realty



Sobha Developers limited

- Sobha Garnet launch campaign
- Sobha Corporate brand campaign



A Truly Global Indian Company
www.sobha.com

Sobha Developers Limited
Real Estate and Construction



PASSION AT WORK

LIFE IN DETAIL

It's perfect everywhere, just like Nature.

SOBHA GARNET
Kondhwa, Pune

3 & 4 BHK Super Luxury Apartments
2032 sq. ft. to 2600sq. ft.

Indulge in a world of magnificent detail – excellently crafted and brilliantly executed. Where life's about its finer nuances. At Shoba, enjoy every detail of life.

Designer Landscape | Rainwater Harvesting System | 24x7 Power Backup | Amphitheater | Proximity to State Highways and City Centre

Call: 99756 40000 / 99756 50000 | punemarketing@sobha.com

A Truly Global Indian Company
www.sobha.com

Sobha Developers Limited
Real Estate and Construction



PASSION AT WORK

LIFE IN DETAIL

It's perfect everywhere, just like Nature.

SOBHA GARNET
Kondhwa, Pune

3 & 4 BHK Super Luxury Apartments
2032 sq. ft. to 2600sq. ft.

Indulge in a world of magnificent detail – excellently crafted and brilliantly executed.
Where life's about its finer nuances. At Shoba, enjoy every detail of life.

Designer Landscape | Rainwater Harvesting System | 24x7 Power Backup | Amphitheater | Proximity to State Highways and City Centre

Call: 99756 40000 / 99756 50000 | punemarketing@sobha.com

A Truly Global Indian Company
www.sobha.com

Sobha Developers Limited
Real Estate and Construction



PASSION AT WORK

LIFE IN DETAIL

It's perfect everywhere, just like Nature.

SOBHA GARNET
Kondhwa, Pune

3 & 4 BHK Super Luxury Apartments
2032 sq. ft. to 2600sq. ft.

Indulge in a world of magnificent detail – excellently crafted and brilliantly executed.
Where life's about its finer nuances. At Shoba, enjoy every detail of life.

Designer Landscape | Rainwater Harvesting System | 24x7 Power Backup | Amphitheater | Proximity to State Highways and City Centre

Call: 99756 40000 / 99756 50000 | punemarketing@sobha.com

A Truly Global Indian Company
www.sobha.com



PASSION AT WORK

Sobha Developers Limited
Real Estate and Construction



A Truly Global Indian Company
www.sobha.com



Sobha Developers Limited
Real Estate and Construction



THE SOBHA TOUCH HANDPICKED LIFESTYLE

Sobha. A lifestyle where every element is carefully chosen to be placed exactly where it's supposed to belong. Surrender to Style at Sobha.

THE SOBHA TOUCH HANDCRAFTED DETAILING

Sobha, where every home is so immaculate, so detailed, so precise, that excellent becomes an understatement. Detailing is Discipline at Sobha.



BRIGADE

THE BRIEF

Brigade is a leading builder in Bangalore. Brigade Exotica is one of the premium offerings. It was one of the tallest buildings in Bangalore but was located in an area which though in proximity to the commercial hub, was still not fully developed. We therefore had to position it for those who have arrived in life, are confident of themselves and are able to see the future growth potential. We also had to highlight the height of the building and hence showcased it through a hot air balloon floating at a lower height.

REAL ESTATE



Quite a few years for it.
Just a few earn it.
Homes for the achiever in you.



BRIGADE



NATIONAL AWARD
FOR LUXURY APARTMENT
PROJECT OF THE YEAR

BEST DESIGN APARTMENT
PROJECT OF THE YEAR
EAST BANGALORE
SALURMURU, JAYANAGARA
BELLURU, KUMARU JAY

35 STORED
TWIN TOWERS
COLLECT IN BANGALORE

3.4 & 5-BEDROOM
PREMIUM RESIDENCES
STARTING ₹1.02 CRORE*

UNIQUE CONCEPT
OF PATIO LIVING

Experiencing Brigade Exotica are indeed reflect your success and achievement. Next to that, the award is indeed an Old Money Award. It is a brand of elegance designed 3, 4 & 5 bedroom apartments and penthouses with a blend of personality of both modern, collective and a bit of vintage and luxury. Choose Brigade Exotica for your success story.

			
Home Automation Smart Home, Smart City Smart Living	Home Automation Smart Home, Smart City Smart Living	Home Automation Smart Home, Smart City Smart Living	Home Automation Smart Home, Smart City Smart Living

1800 102 9977 | salesenquiry@brigadegroup.com

BRIGADE
EXOTICA
OLD MONEY ROSE

BrigadeExotica.com





 <p>3, 4 & 5 BEDROOM PREMIUM RESIDENCES STARTING ₹1.56 CRORE*</p>	 <p>35 STORIED TWIN TOWERS. TALLEST IN BANGALORE.</p>	 <p>LUXURY APARTMENT PROJECT OF THE YEAR</p>	 <p>BRIGADE EXOTICA OLD MADRAS ROAD</p>
<p>1800 102 9977 BrigadeExotica.com</p>			



BRIGADE



THERE'S NO FORMULA
FOR SUCCESS,
BUT THERE'S
AN ADDRESS
FOR IT.



Ready to
move in

Actual Image - Shot on location



Brigade At No. 7 offers you the finest amenities at the most luxurious location in town - minutes from lifestyle destinations, super specialty hospitals, international schools, and much more. With only 55 homes spread over a sprawling 3.1 acre property, we bring you limited edition 4 & 5 bedroom premium residences fit for royals. The best part? We are ready to move in. So visit us today!



4.7 Crore
Onwards



One Premium
Residence per floor
(3350 To 5180 sq.ft.)



10,000 sq.ft.
Clubhouse



OC
Received

BRIGADE
AT NO. 7
BANJARA HILLS

BrigadeAtNo7.com

1800 102 9977

Call: 1800 102 9977 | salesenquiry@brigadegroup.com



BRIGADE
AT NO. 7
BANJARA HILLS

Re launch of A tNo.7 Hyderabad Project



Brigade At No. 7 offers you the finest amenities at the most luxurious location in town - minutes from lifestyle destinations, super specialty hospitals, international schools, and much more. With only 55 homes spread over a sprawling 3.1 acre property, we bring you limited edition 4 & 5 bedroom premium residences fit for royals. The best part? We are ready to move in. So visit us today!



4.7 Crore
Onwards



One Premium
Residence per floor
(3350 To 5180 sq.ft.)



10,000 sq.ft.
Clubhouse



OC
Received

Call: 1800 102 9977 | salesenquiry@brigadegroup.com



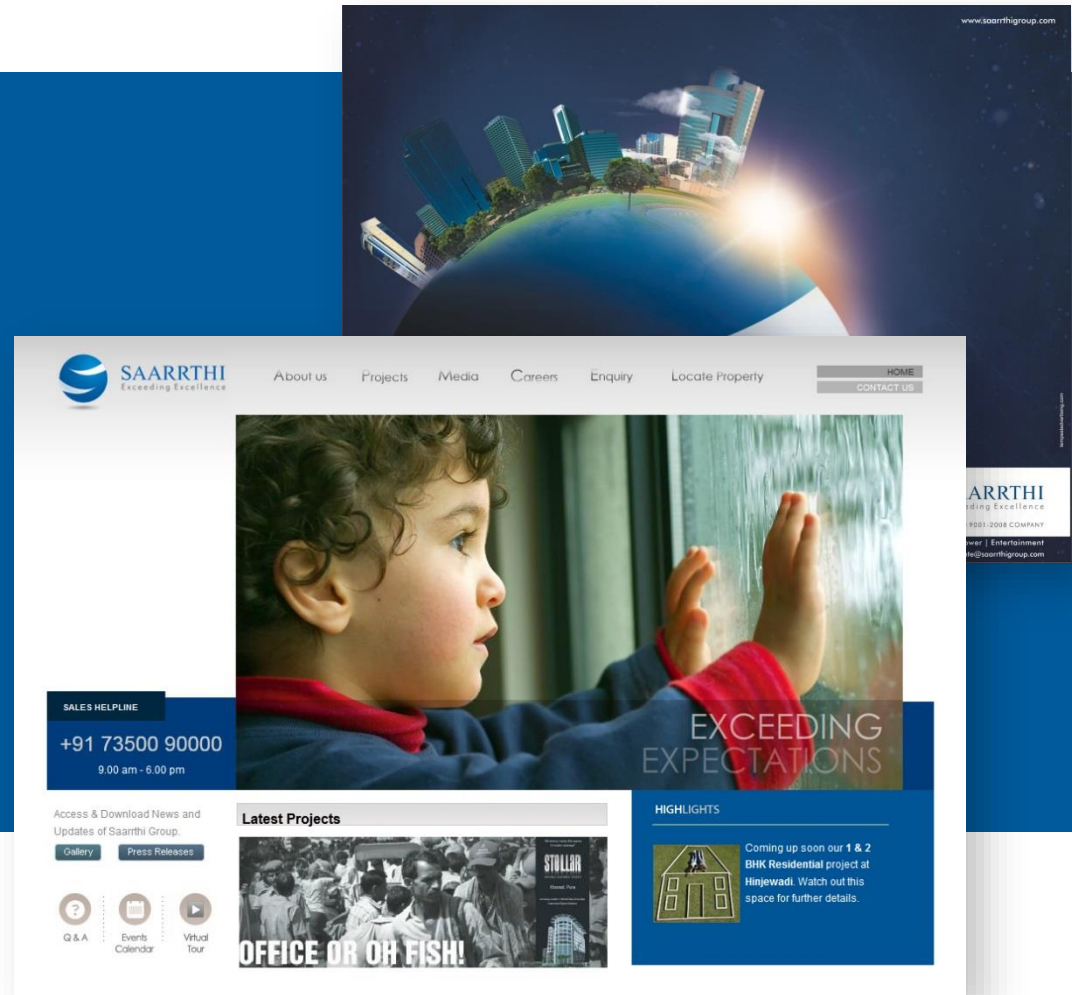
Realty



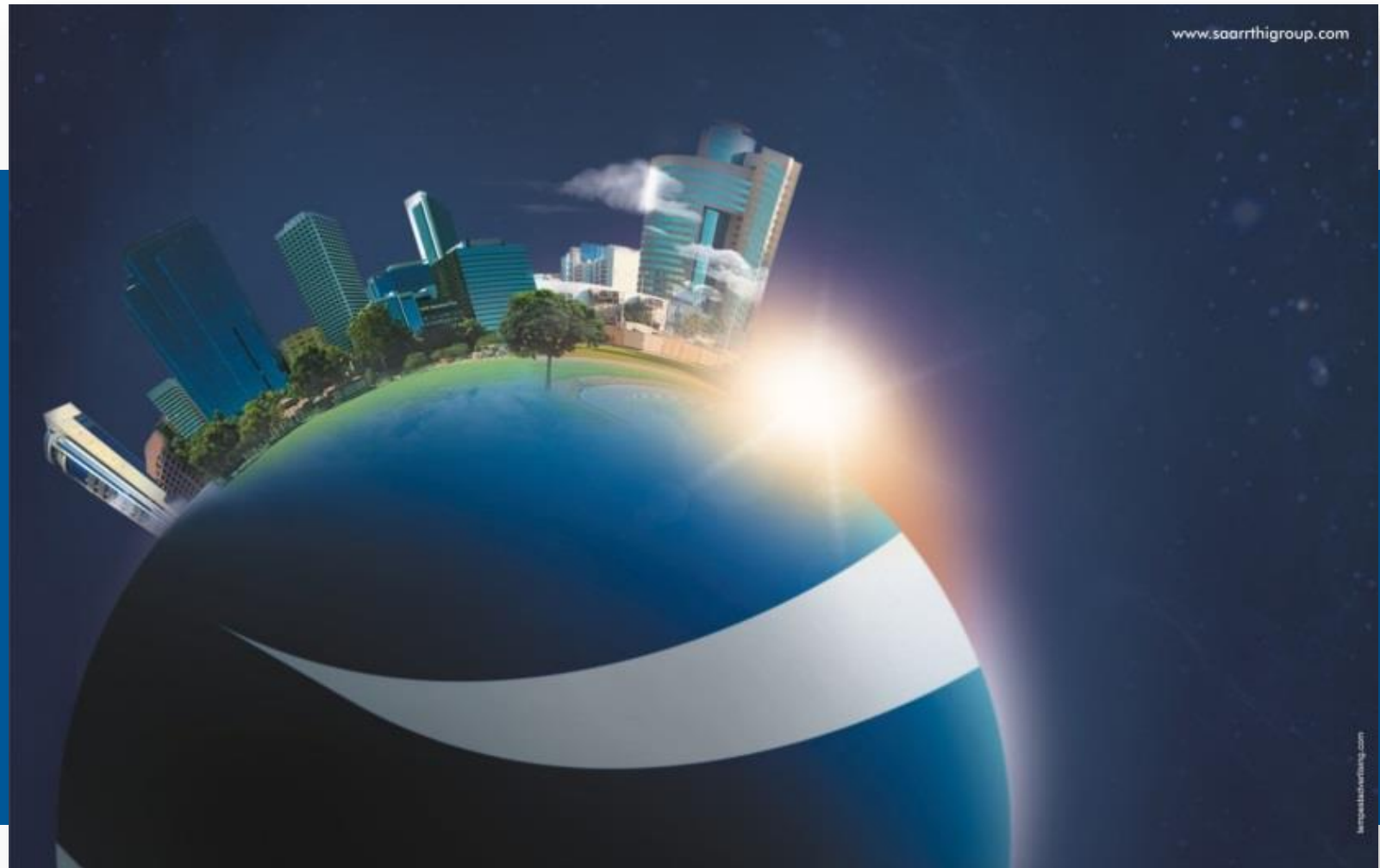
Real Estate | Redevelopment | Entertainment

SAARRTHI GROUP

Rebranding & New Look



www.saarrthigroup.com



Changing World With Excellence



IS NOW



SAARRTHI
Exceeding Excellence
AN ISO 9001:2008 COMPANY

Real Estate | Infrastructure | SRA | Redevelopment | Power | Entertainment
501, Eden Hall, Model Colony, Pune - 16, Maharashtra, India. Tel.: + 91 - 20 - 25663331 Mob.: +91 73500 90000 | corporate@saarrthigroup.com



About us

Projects

Media

Careers

Enquiry

Locate Property

HOME

CONTACT US

SALES HELPLINE

+91 73500 90000

9.00 am - 6.00 pm



EXCEEDING
EXPECTATIONS

Access & Download News and
Updates of Saarrthi Group.

Gallery

Press Releases



Q & A



Events
Calendar



Virtual
Tour

Latest Projects



HIGHLIGHTS



Coming up soon our **1 & 2 BHK Residential** project at **Hinjewadi**. Watch out this space for further details.



This Gudi Padwa, the traditional 'Poona' meets the cosmopolitan 'Pune'.

Introducing Saarrthi Pune-Re : A redevelopment initiative by Saarrthi Group.

Poona - the name perennially associated with traditions, customs and values meets Pune - The name synonymous with new-age, forward-looking and modern beliefs with Saarrthi Pune-Re. It means that this new-age thinking will amalgamate with traditional values and what will come out of it will be a masterpiece - like all our other projects at Saarrthi. With an experienced team and qualified leaders, we have already managed to redevelop over 6,21,000 sq. ft of area in Pune. Trust us for our quality and we will give you the aesthetics of a modern lifestyle with the old charm intact. Think of redevelopment, Think of Saarrthi Pune-Re.



Ongoing Projects



Madhuvanti
Karve Road, Pune
SHOPS: 270 sq. ft to 1651 sq. ft
SHOWROOMS: 1285 sq. ft onwards



Laxminarayan
Karve Road, Pune
SHOWROOMS & OFFICES
1600 sq. ft onwards



Navnamrata
Paul Road, Pune
7, 2 & 3 BHK Apartments
OFFICES: 800 sq. ft onwards
SHOWROOMS: 1200 sq. ft onwards

Upcoming Projects at Mayur Colony, Pune 2 & 3 BHK Apartments | Prabhat Road, Pune 3 & 4 BHK Apartments | Model Colony, Pune 3 BHK Apartments

Redevelopment Business Proposals are welcome. Please call - 90111 22 809



REDEVELOPMENT DIVISION OF SAARRTHI GROUP



Stellar – Commercial Space,

Launch Ad

www.saarrthigroup.com



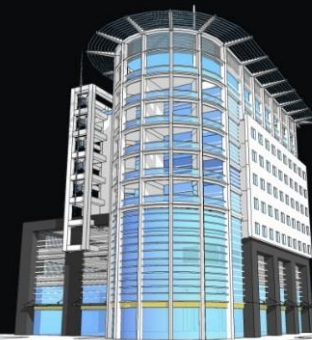
OFFICE OR OH FISH!

Still stuck-up in tacky office spaces
for location advantage?

STELLAR

ALL IN ALL DYNAMIC SPACES

Amazing Location | World-Class Amenities
Customized Space Solutions



Site: Near Zensar IT Park,
Kharadi, Pune, Maharashtra
Mob: +91 90110 83332

Office: 501, Eden Hall,
Model Colony, Pune - 16,
Maharashtra, India.

Stellar – Commercial Space,

www.saarrthigroup.com

High Ad


SAARRTHI GROUP

Still stuck-up in tacky office spaces for location advantage?

STELLAR

ALL IN ALL DYNAMIC SPACES

Amazing Location | World-Class Amenities
Customized Space Solutions



Site: Near Zensar IT Park, Kharadi, Pune, Maharashtra
Mob: +91 90110 83332

Office: 501, Eden Hall, Model Colony, Pune - 16, Maharashtra, India.

BUSINESS OR BUSY-NESS

Stellar – Commercial Space,

[Home](#) [About Us](#) [Overview](#) [Specifications](#) [Amenities](#) [Floor Plan](#) [Layout Plan](#) [Photo Gallery](#) [Contact Us](#)

STELLAR
ALL IN ALL DYNAMIC SPACES



Convenient Location, Close proximity to all the utilities and recreational centers, wonderful neighborhood of world class organizations, great approach roads, world class infrastructure ample residential opportunities suiting all classes, what else one looks for an ideal office space. *Stellar*- All in All Dynamic Space, offers you not only world class offices but also a neighborhood which is conducive for your business and susceptible for growth..

Stellar- All in All Dynamic Space, offers you not only world class offices but also a neighborhood which is conducive for your business and susceptible for growth..



THE CHALLENGE

Design communication to attract new customers, who possess the will to buy as well as the purchasing power to be able to do so

THE SOLUTION

Position Green Grace as the "Address of Pride", a top notch and eco-savvy, premium luxury property

THE OBJECTIVE

Attract the right customers who will understand and appreciate the value of the offerings, as provided by S&S Green

THE RESULT

150 Apartments in Block A Sold Out
A hike in brand awareness
Reflected in walk-ins and sales calls





Air | Light
Water | Health

The
wind
comes
from a
Japanese
forest.

A Japanese forest stands beside your home.



Homes that stand a class apart
GACHIBOWLI

Luxury apartments | 2300 sq. ft. to 2580 sq. ft. | ₹ 110 Lakhs onwards



INTL.
AIRPORT
20 min



FINANCIAL
DISTRICT
5 min



IT
CORRIDOR
5 min



INTL.
SCHOOLS
5 min



REPUTED
HOSPITALS
10 min



LIFESTYLE
DESTINATIONS
10 min



OUTER
RING ROAD
5 min

Call: 90522 52222

Email: marketing@ssgreengrace.com | www.ssgreengrace.com



The
Sunlight
stays
home
longer.

Luxury apartments | 2300 sq. ft. to 2580 sq. ft. | ₹. 99 Lakh onwards.



Call: 9052252222
www.ssgreengrace.com



The
wind
comes
from a
Japanese
forest.

Luxury apartments | 2300 sq. ft. to 2580 sq. ft. | ₹. 99 Lakh onwards.



Call: 9052252222
www.ssgreengrace.com



The
water
runs
seven
stories
deep.

Luxury apartments | 2300 sq. ft. to 2580 sq. ft. | ₹. 99 Lakh onwards.



Call: 9052252222
www.ssgreengrace.com



RACHANA
LIFESTYLE
The Spirit of Creation

THE CHALLENGE

Rachana Lifestyle had been in the Pune Market for the over 3 decades but was relatively unknown

THE SOLUTION

We suggested them to do a corporate campaign taking their philosophy ahead

THE OBJECTIVE

Have a greater market reach. Create newer customer base by showing market presence. It was time to reinvent it's band image

THE RESULT

- 100+ enquiries on their existing projects
- Presently known by the Puneites as one of the prominent builder in the city
- Increase their client base by 100%

RACHANA CORPORATE CAMPAIGN



www.rachanalifestyle.com



RACHANA
 LIFESTYLE
The Spirit of Creation

Drops create Ocean. Oceans create Drops.

Rachana Lifestyle: Celebrating the spirit of creation.

Create: What's yours, what's ours, the world, the galaxy. Evolve, never stop. Follow the cycle, it never ends. Create one, create all. It's this spirit of creation that we celebrate at Rachana in all our commercial and residential projects. Have a look, and decide for yourself!

Corporate Office: 'Rachana House', 1229/B, F. C. Road, Deccan Gymkhana, Pune -411 004
 Mob : +91 9604 03 5000, +91 9822 93 5000 | E-mail : sales@rachanalifestyle.com



Law College Road

Launching Soon

RACHANA
BELLA CASA-II
 2 AND 3 BHK FLATS
 WORLD WITHIN BEACH

Baner



Baner

www.rachanalifestyle.com

www.rachanalifestyle.com



RACHANA
LIFESTYLE
The Spirit of Creation

Sun creates Rays. Rays create Sun.

Rachana Lifestyle Celebrating the spirit of creation.

Create: What's yours, what's ours, the world, the galaxy. Evolve, never stop. Follow the cycle, it never ends. Create one, create all. It's this spirit of creation that we celebrate at Rachana in all our commercial and residential projects. Have a look, and decide for yourself!

Corporate Office: 'Rachana House', 1229/B, F.C. Road, Deccan Gymkhana, Pune - 411 004
Mob: +91 9604 03 5000, +91 9822 93 5000 | E-mail: sales@rachanalifestyle.com

IS 9001:2008 - Quality Management system | IS 14001:2004 - Environmental Management System | IS 18001:2007 - OHSAS - OCCUPATIONAL HEALTH & SAFETY MANAGEMENT SYSTEM

Launching Soon



BELLA CASA-II
A RACHANA PROJECT
WORLD WITHIN REACH



Law College Road

Batter

Batter



RACHANA
LIFESTYLE
The Spirit of Creation

Air creates Forest. Forest creates Air.

Rachana Lifestyle: Celebrating the spirit of creation.

Create: What's yours, what's ours, the world, the galaxy. Evolve, never stop. Follow the cycle, it never ends. Create one, create all. It's this spirit of creation that we celebrate at Rachana in all our commercial and residential projects. Have a look, and decide for yourself!

'Rachana House', 1229/B, F.C. Road, Deccan Gymkhana, Pune - 411 004 Tel: +91 20 66013500 E-mail: sales@rachanalifestyle.com

IS 9001:2008 - Quality Management system | IS 14001:2004 - Environmental Management System | IS 18001:2007 - OHSAS - OCCUPATIONAL HEALTH & SAFETY MANAGEMENT SYSTEM

Upcoming Projects

RACHANA
Yashprabha
The Crowned Jewel
Law College Road

RACHANA
BELLA CASA-II
A RACHANA PROJECT
WORLD WITHIN REACH

RACHANA
BELLA CASA-II
WORLD WITHIN REACH **LAUNCH Campaign**

www.rachanalifestyle.com

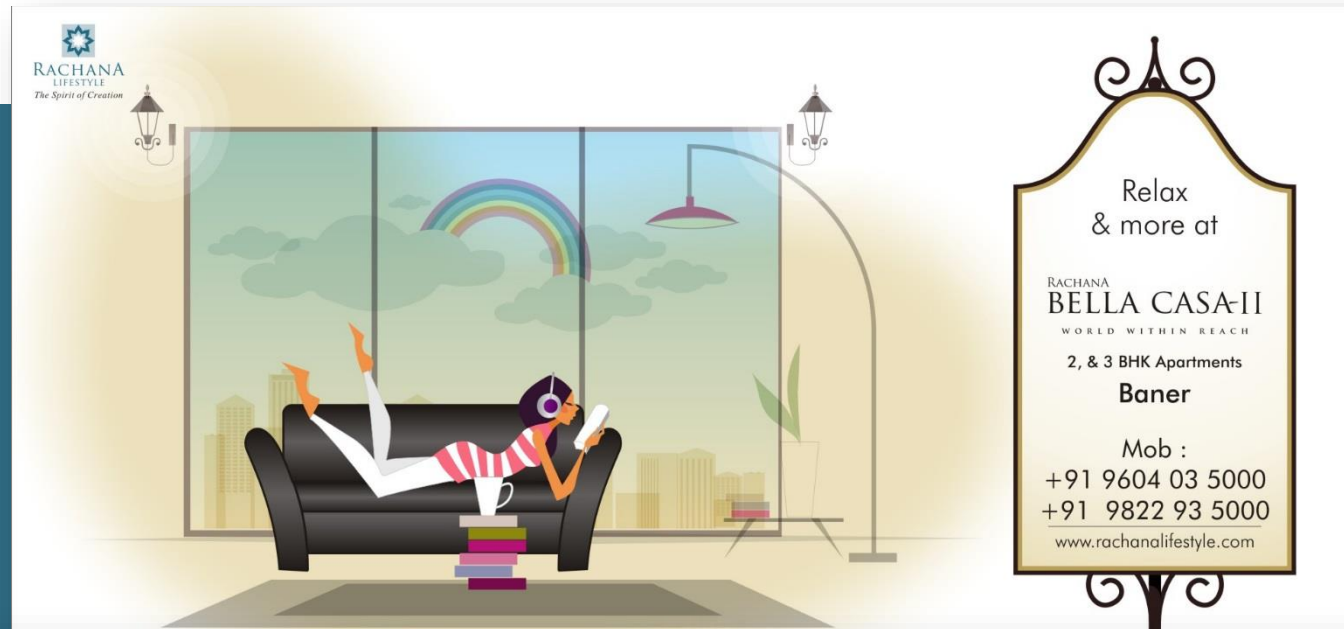


IT'S NOT THAT YOU NEED A
PLACE
TO
GOSSIP.
WE'VE PROVIDED YOU ONE,
ANYWAY.



RACHANA
BELLA CASA-II
WORLD WITHIN REACH

Billboard Campaign

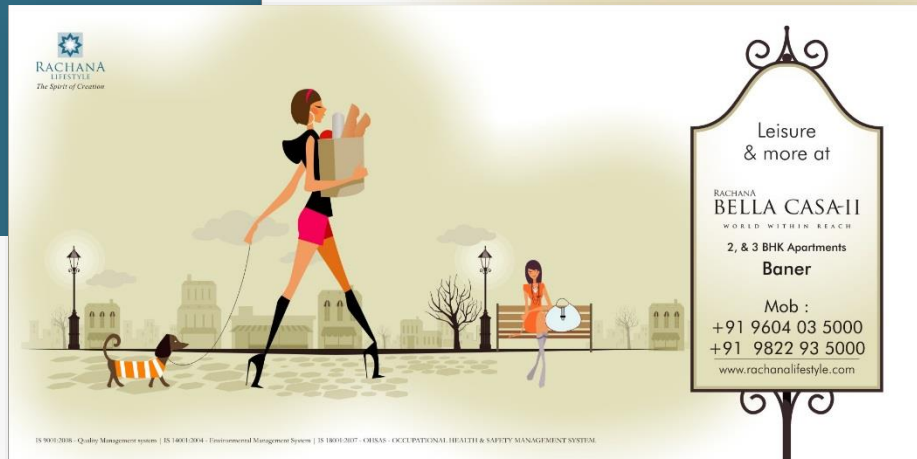


**Relax
& more at**

RACHANA
BELLA CASA-II
WORLD WITHIN REACH

**2, & 3 BHK Apartments
Baner**

Mob :
+91 9604 03 5000
+91 9822 93 5000
www.rachanalifestyle.com

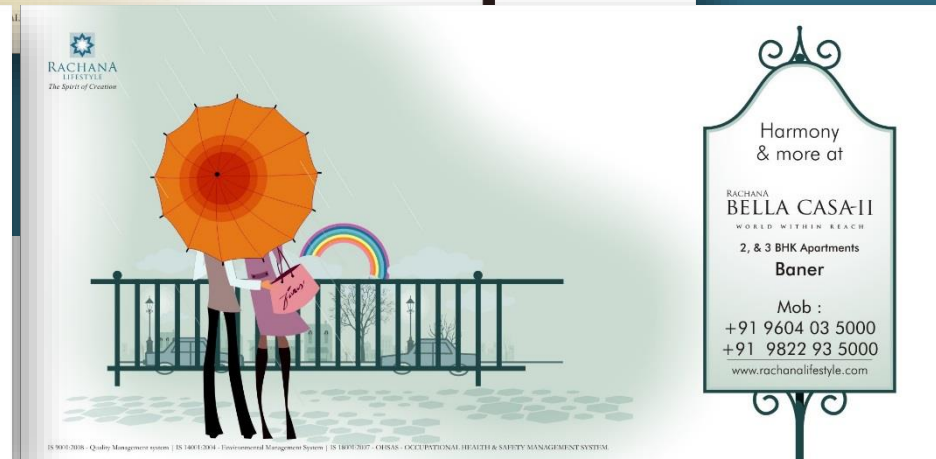


**Leisure
& more at**

RACHANA
BELLA CASA-II
WORLD WITHIN REACH

**2, & 3 BHK Apartments
Baner**

Mob :
+91 9604 03 5000
+91 9822 93 5000
www.rachanalifestyle.com



**Harmony
& more at**

RACHANA
BELLA CASA-II
WORLD WITHIN REACH

**2, & 3 BHK Apartments
Baner**

Mob :
+91 9604 03 5000
+91 9822 93 5000
www.rachanalifestyle.com

RACHANA
BELLA CASA-II
WORLD WITHIN REACH

**BELLA CASA SITE OFFICE
BRANDING**





Marina Skies by Cybercity

Launch Campaign





LAUNCH Campaign - Teaser



www.marinaskies.in

MARINA SKIES
BY CYBERCITY
NEARHITEC CITY MMTS

GRAND LAUNCH TODAY

Behold Marina Skies by Cybercity, Hyderabad's newest lifestyle-residence designed by master architect Hafeez Contractor.

On a map where location is luxury, Marina Skies is your space at the centre. Four kms from HITEC City, the G+31storey towers of Marina Skies will stand tall and proud, reaching towards clouds, adorned by serene lakes, offering a view that takes the breath away. Here, happening Hyderabad will be buzz all around you, yet you will be nestled deep within the recess of nature. The flamboyance of designer-apartments will meet the functionality of urban living, and you feel at home.

GRAND LAUNCH TODAY

4Kms from HITEC City
2 & 3 BHK Designer Apartments
2 Towers in 8.5 acres, G + 31 Storeys
80% Open Spaces
16 Flat Types from 1160 Sft. - 2220 Sft.

King Size Swimming pool | World class amenities & more | 50,000 sft Clubhouse

Call: +91 99894 24444 / 3999 3999 | E-mail: sales@marinaskies.in

cybercitybuilders | Cybercity_hyd

Swimming Pool, Go-Ten-Ball, Restaurant, Lounge, Banquet Hall, Grocery Store, Yoga Deck, Pharmacy, Squash Court, Library, Gym, Park Lawn, Tennis Court, Tennis Lawn, Security Detail, & more

Corporate Office: Cybercity Builders & Developers Pvt. Ltd., 2nd & 4th Floors, Plot No. 55, Kesar Hills, Road # 35, Computer Junction II, Opposite to Water Lens, Hyderabad - 500 081. Phone: +91 40 2311 1222, www.cybercity.in
Regional Office: Cybercity, Hyderabad Hills, Opposite to, Kesar Hills Estate, Madhapur - Kalyandurg Road, Near to HITEC City Metro Station, Hyderabad - 500 081. Phone: +91 40 244444

LAUNCH Campaign - Reveal



**WAITING
FOR
HIS TIME
OR
SAILING
THROUGH THE TIME?**



Pearl Celestial

Premium Luxury Apartments

THE CHALLENGE

Design communication to get potential leads from Newspaper ads and Hoardings

THE SOLUTION

Position Pearl Celestial as the prime project closer to Financial District and that offers connectivity to ORR as well.

THE OBJECTIVE

To create awareness about the project and generate maximum leads

THE RESULT

450+ ENQUIRIES



www.bpril.org



THIS CLOSE.

THERE'S A REASON WHY PEARL CELESTIAL IS
A LUXURY RESIDENCE.
IT OFFERS A VIEW CALLED THE FINANCIAL DISTRICT.

On a map where location is luxury, BPR Infrastructure Ltd. brings you the prime position. Behold PEARL CELESTIAL.

The all new, 107 units luxury apartment residence at the doorstep of Financial District. Surrounded by MNC offices, prestigious schools, super-specialty hospitals, luxury hotels and lifestyle destinations, this is a true landmark of an address. A home that brings together the value of today with the vision of tomorrow. Starting at 55 lakhs*, it's an offer you can't refuse.



2BHK: 1502 to 1517 sq.ft.
3BHK: 1784 to 2466 sq.ft.

Possession by December 2016

Call : 91009 85550,
97013 46171, 97013 46172
Email: pearlcelestial@bpril.org

**Pearl
Celestial**

Premium Luxury Apartments
Kokapet, Gachibowli

Corporate Office: BPR INFRASTRUCTURE LIMITED,
First Floor, Fortune Chambers, Image Garden Road,
Madhapur, Hyderabad - 500 081. Tel: 040-4021 1441-43

*Terms and conditions apply



**Pearl
Celestial**

Premium Luxury Apartments
Kokapet, Gachibowli

SURE THING.

THERE'S A REASON WHY YOU CHOOSE
ONE HOME OVER OTHERS.
IT IS THE SURE THING.

On a map where location is luxury, BPR Infrastructure Ltd. brings you the prime position. Behold PEARL CELESTIAL.

The all new, 107 units luxury apartment residence at the doorstep of Financial District. Surrounded by MNC offices, prestigious schools, super-specialty hospitals, luxury hotels and lifestyle destinations, this is a true landmark of an address. A home that brings together the value of today with the vision of tomorrow. Starting at 55 lakhs, it's an offer you can't refuse.



2 & 3 BHK
Apartments

Starting
from 1206 sq.ft.

Call: 97013 46171, 97013 44955



BPR INFRASTRUCTURE LIMITED. Plot no 103/3/3/4, Fortune Chambers, Image Garden Road, Madhapur, Hyderabad - 500 081. Tel: 040-4021 1441-43. Email: sales@bpril@gmail.com. www.bpril.org



**Pearl
Celestial**

Premium Luxury Apartments
Kokapet, Gachibowli

THAT BIG.

THERE'S A REASON WHY SOME APARTMENTS GIVE
THE BIGGEST RETURNS ON INVESTMENT.
THEY HAVE MICROSOFT AND ISB FOR NEIGHBOURS.

On a map where location is luxury, BPR Infrastructure Ltd. brings you the prime position. Behold PEARL CELESTIAL.

The all new, 107 units luxury apartment residence at the doorstep of Financial District. Surrounded by MNC offices, prestigious schools, super-specialty hospitals, luxury hotels and lifestyle destinations, this is a true landmark of an address. A home that brings together the value of today with the vision of tomorrow. Starting at 55 lakhs, it's an offer you can't refuse.



2 & 3 BHK
Apartments

Starting
from 1206 sq.ft.

Call: 97013 46171, 97013 44955



BPR INFRASTRUCTURE LIMITED. Plot no 103/3/3/4, Fortune Chambers, Image Garden Road, Madhapur, Hyderabad - 500 081. Tel: 040-4021 1441-43. Email: sales@bpril@gmail.com. www.bpril.org

Other realty clients we have been associated with



BRICKS & BONDS

www.brickcastle.com

Because royal castles need royal treatment.

Just like our homes.

Limited Edition Homes studded with luxurious utility elements.

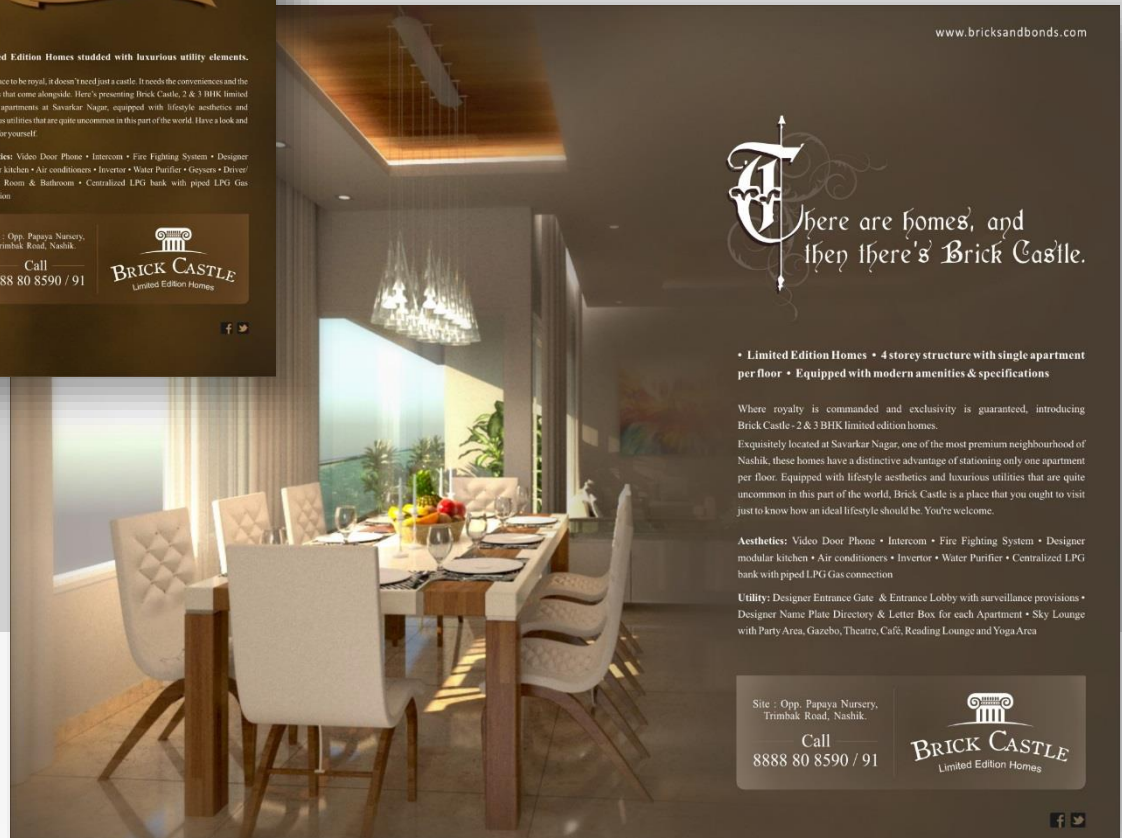
For a place to be royal, it doesn't need just a castle. It needs the conveniences and the luxuries that come alongside. Here's presenting Brick Castle, 2 & 3 BHK limited edition apartments at Savarkar Nagar, equipped with lifestyle aesthetics and luxurious utilities that are quite uncommon in this part of the world. Have a look and decide for yourself.

Aesthetics: Video Door Phone • Intercom • Fire Fighting System • Designer modular kitchen • Air conditioners • Inverter • Water Purifier • Geysers • Driver's Servant Room & Bathroom • Centralized LPG bank with piped LPG Gas connection

Site : Opp. Papaya Nursery,
Trimbak Road, Nashik.

Call
8888 80 8590 / 91

BRICK CASTLE
Limited Edition Homes



www.bricksandbonds.com

There are homes, and then there's Brick Castle.

• Limited Edition Homes • 4 storey structure with single apartment per floor • Equipped with modern amenities & specifications

Where royalty is commanded and exclusivity is guaranteed, introducing Brick Castle - 2 & 3 BHK limited edition homes.

Exquisitely located at Savarkar Nagar, one of the most premium neighbourhood of Nashik, these homes have a distinctive advantage of stationing only one apartment per floor. Equipped with lifestyle aesthetics and luxurious utilities that are quite uncommon in this part of the world, Brick Castle is a place that you ought to visit just to know how an ideal lifestyle should be. You're welcome.

Aesthetics: Video Door Phone • Intercom • Fire Fighting System • Designer modular kitchen • Air conditioners • Inverter • Water Purifier • Centralized LPG bank with piped LPG Gas connection

Utility: Designer Entrance Gate & Entrance Lobby with surveillance provisions • Designer Name Plate Directory & Letter Box for each Apartment • Sky Lounge with Party Area, Gazebo, Theatre, Café, Reading Lounge and Yoga Area

Site : Opp. Papaya Nursery,
Trimbak Road, Nashik.

Call
8888 80 8590 / 91

BRICK CASTLE
Limited Edition Homes

Other realty clients we have been associated with



WHERE GODS ENVY
MORTALS


**THE
BALMORAL
ESTATE**
ROYALTY INHERITED

HOME TO LUXURY AT BANER
PREMIUM 4 BEDROOM APARTMENTS (3600 SQ.FT.)

 **kasturi** | + 91 98231 99500 | + 91 95456 36000 | info@kasturihousing.com | www.thebalmoralestate.com

BECAUSE GRANDEUR COMES
WITH THE CROWN





**THE
BALMORAL
ESTATE**
ROYALTY INHERITED

HOME TO LUXURY AT BANER
PREMIUM 4 BEDROOM APARTMENTS (3600 SQ.FT.)

 **kasturi** | + 91 98231 99500 | + 91 95456 36000 | info@kasturihousing.com | www.thebalmoralestate.com


Other realty clients we have been associated with



DIVE INTO OPULENCE

Life at
Water's Edge
12 acres of Palatial Living

3, 3.5 & 4 BHK Premium Apartments
3, 3.5 & 4 BHK single-level/duplex Penthouses
5 BHK Row Villas



70 ft infinity swimming pool

SAGAR
PROPERTIES
BY KANUBHAI SAGAR

Call: +91 9372 30 6060

Site: New Wakad-Baner DP Road,
Pimple Nilakh,
Aundh Annexe, Pune - 27

www.sagarproperties.com



READY TO SERVE

LIFE AT
Water's Edge
12 acres of Palatial Living

Premium Apartments | Penthouses | Row Villas

Book Now:
3, 4 & 5 BHK Premium Residences

Home To More Than 200 Families
Best-in-class, Ready-to-use Amenities

Call: +91 9372 30 6060
sales@sagarproperties.com

Pimple Nilakh,
Aundh Annexe

SAGAR
PROPERTIES
BY KANUBHAI SAGAR

Your capital gain can be the one
that lays the golden egg!



Spread over 12 acres, Water's Edge is lavishly poised on the bank of the serene Mula River. An elite residential neighborhood with six - 12 storey towers & six row villas; at Water's Edge, life is indeed palatial.

Water's Edge
12 acres of Palatial Living
Premium Apartments | Penthouses | Row Villas

SAGAR
PROPERTIES
BY KANUBHAI SAGAR

Book now: 3, 4 & 5 BHK Premium Residences
Home to more than 200 families | Best-in-class, Ready-to-use amenities

Om Sagar Developers, 201-A8, 2nd Floor, City Towers, A/347, Boat Club Road, Pune - 01
Tel.: +91-20-3047 7100 | www.sagarproperties.com

Other realty clients we have been associated with



IDEA

We created two protagonists – Tim (the boy) & Gia (the girl). We started calling Tim – ‘T’, while Gia was referred to as ‘G’. We tried creating different situations pertaining to every month and tried to weave around a tale of two people who are quite different from each other but still have a connection between them.

BRIEF- Table Calendar TCG

TCG Real Estate, one of the leading real estate developers in Pune, wanted us to create a calendar for the year 2016. They were open to suggestions and were clear that they don't want the calendar to look like a real estate calendar in any way.

Other realty clients we have been associated with

www.credaipune.org

CREDAI
PUNE METRO
ISO 9001 Organisation

THE BIGGEST PROPERTY FAIR
OF PUNE IS BACK WITH
THE BEST OF

Inauguration Today!
Venue: Amanora Town Centre, Kharadi Bypass, Pune.
Date: 19 - 20 - 21 Oct 2012 **Time:** 10 am to 8 pm

CREDAI Pune brings to you PROFEST EAST- the biggest and the best property exhibition showcasing the best in real estate when it comes to Pune East. PROFEST is the most user-friendly and trustworthy platform to decide on properties.

PROFEST Snapshots: Properties for all budgets under one roof • More than XXX renowned real estate brands • Encompassing Flats, Bungalows, Shops and Commercial Spaces. • On the spot financial assistance and options • Daily Offers and Schemes • Trustworthy & Buyer friendly platform

• Koregaon Park • Kalyani Nagar • Hadapsar • Magarpatta • Wagholi • Nagar Road • Dhanori • Vishrantwadi • Viman Nagar • NIBM • Kondhwa • Undri • Lullanagar • Wanowrie • Mohammadwadi

Pune's Biggest & Best Property Exhibition
 CREDAI-PUNE METRO PRESENTS
PROFEST EAST
 PUNE'S EXCLUSIVE PROPERTY FAIR

www.credaipune.org | Helpline: 9822183359

CREDAI
PUNE METRO
ISO 9001 Organisation

THE BIGGEST PROPERTY FAIR
OF PUNE IS BACK WITH
THE BEST OF

Inauguration Today!
Venue: VITS Hotel, Bangluru Highway (NH-4) Adj. Shivaji Sports Complex, Balewadi, Pune.
Date: 26 - 27 - 28 Oct 2012 **Time:** 10 am to 8 pm

CREDAI Pune brings to you PROFEST WEST- the biggest and the best property exhibition showcasing the best in real estate when it comes to Pune West. PROFEST is the most user-friendly and trustworthy platform to decide on properties.

PROFEST Snapshots: Properties for all budgets under one roof • More than XXX renowned real estate brands • Encompassing Flats, Bungalows, Shops and Commercial Spaces. • On the spot financial assistance and options • Daily Offers and Schemes • Trustworthy & Buyer friendly platform

• Hinjewadi • Wakad • Kothrud • Warje • Sinhagad Road • Bavdhan • Pashan • Balewadi • Baner • Aundh • Pimpri • Chinchwad • Mashi • Ravet • Talegaon • Chakan

Pune's Biggest & Best Property Exhibition
 CREDAI-PUNE METRO PRESENTS
PROFEST WEST
 PUNE'S EXCLUSIVE PROPERTY FAIR

PRIZE
for Best Fair...

CREDAI
PUNE METRO
ISO 9001 Organisation

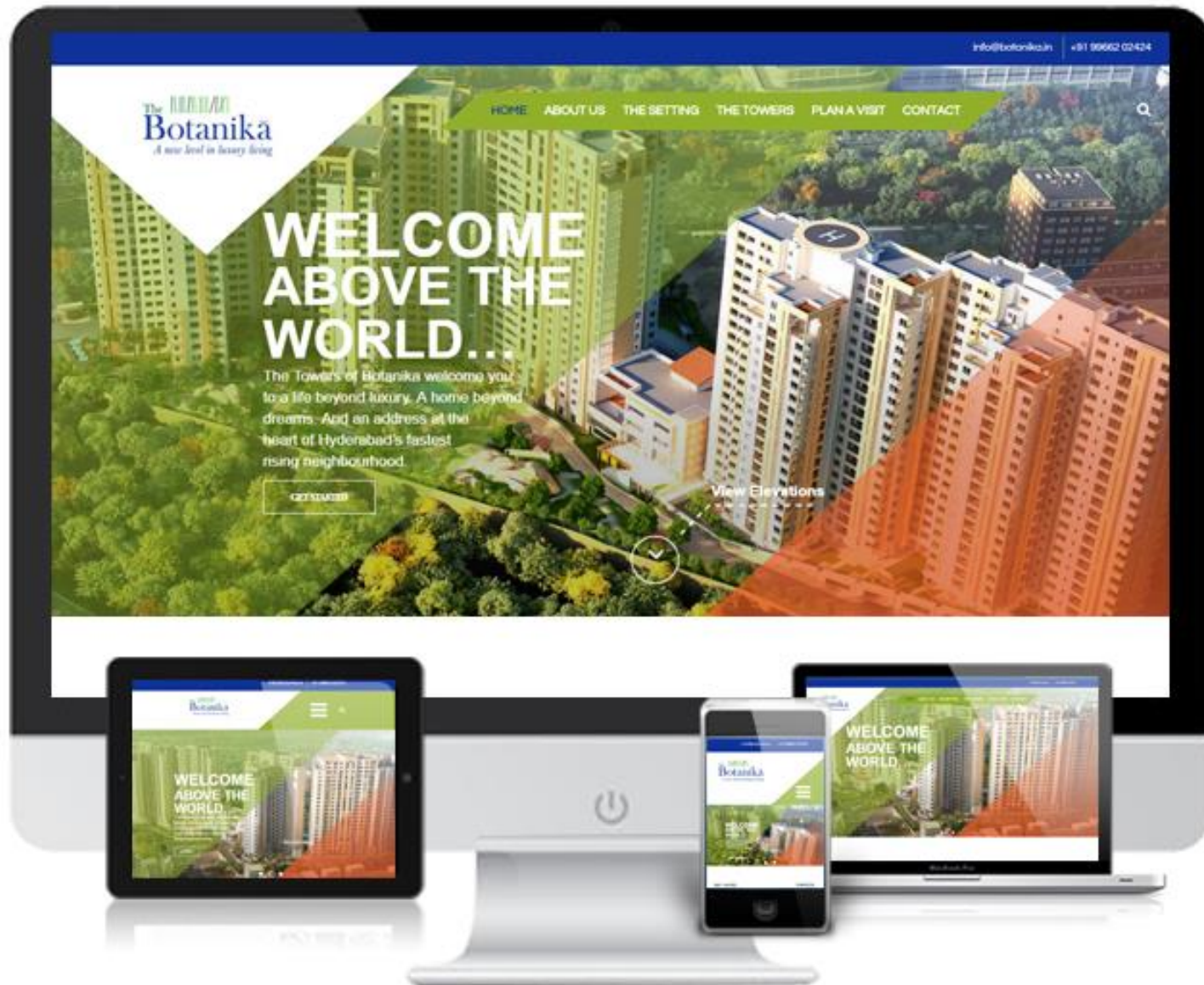
PUNE'S MEGA PROPERTY EXHIBITION IS BACK AND IT'S BIGGER THAN EVER!

PROFEST 2012
 PUNE'S MEGA PROPERTY FAIR

Venue: SSPRMS Ground, Near Hotel Le Meridien, Next to B.T.O., Pune
Dates: 6th - 8th Jan 2012
Time: 10 am - 8 pm

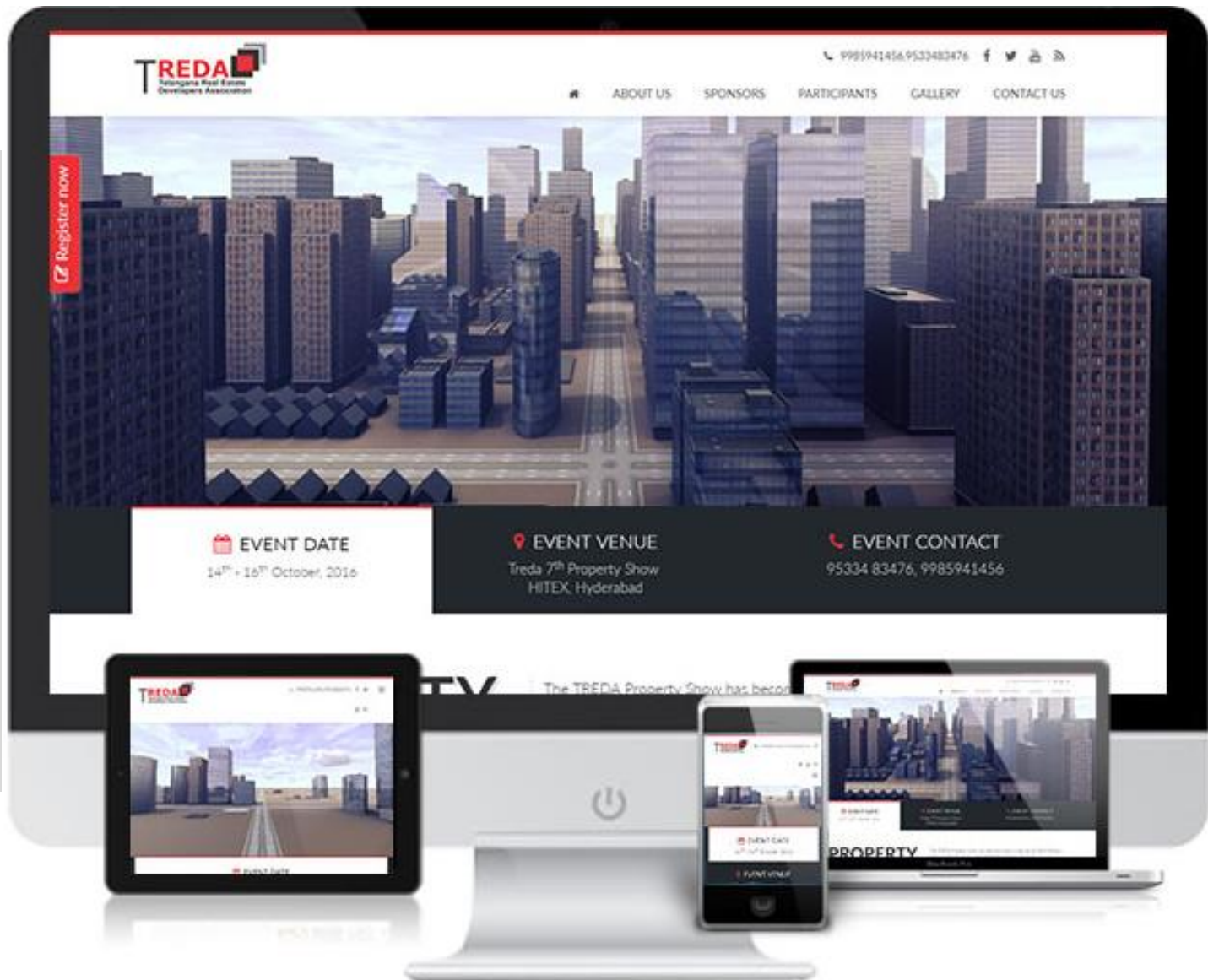
PROFEST 2012 - Pune's Biggest Property Fair
 • Pune's biggest and property exhibition • Convenient and centrally located venue
 • More than XXX renowned real estate brands • On the spot financial assistance and options • Daily Offers and Schemes • Trustworthy & Buyer friendly platform
 • On the spot financial assistance and options • Daily Offers and Schemes • Trustworthy & Buyer friendly platform

CREDAI/PUNE METRO/HELPLINE: 9822183359 | www.credaipune.org



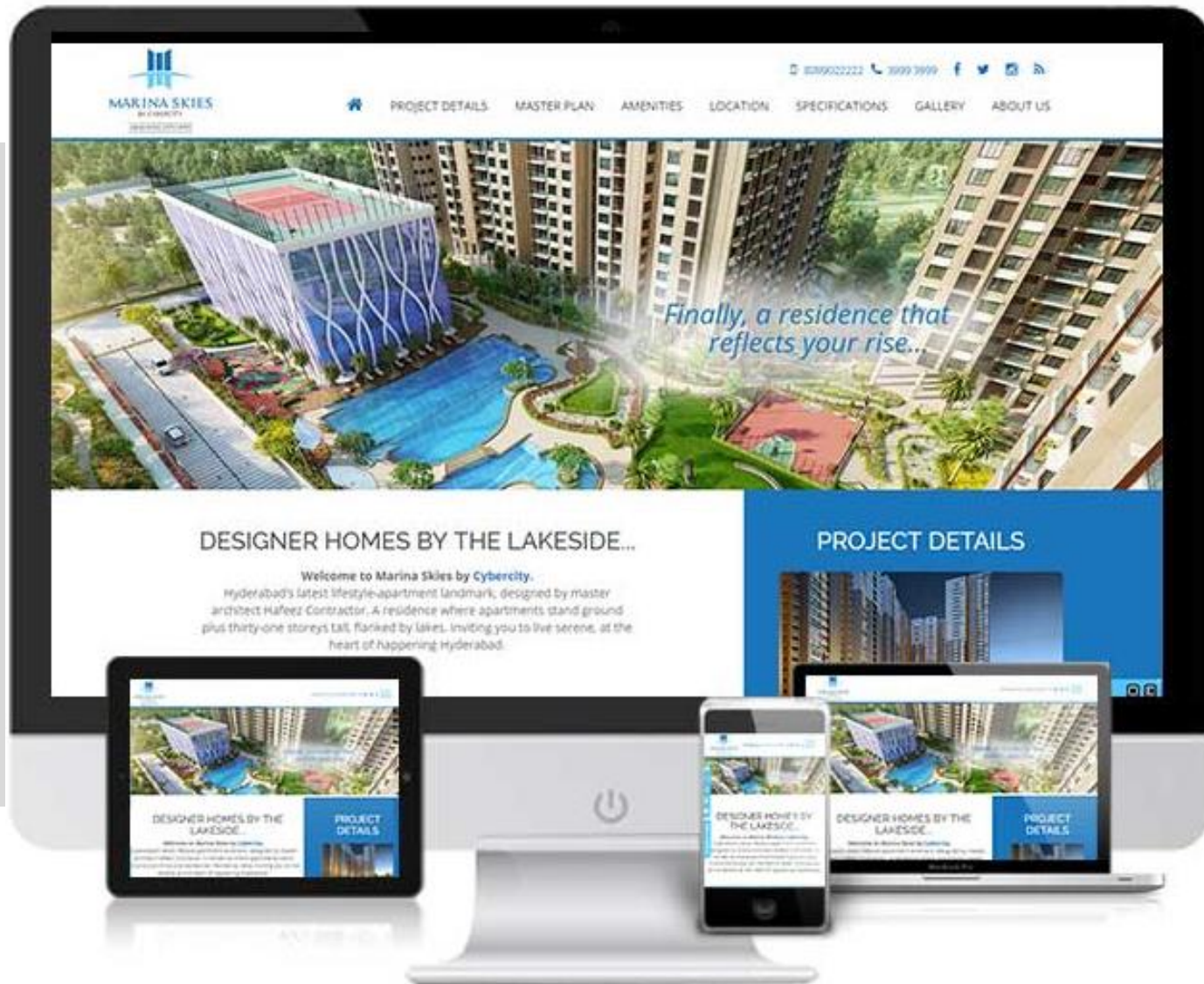


Other realty clients we have been associated with





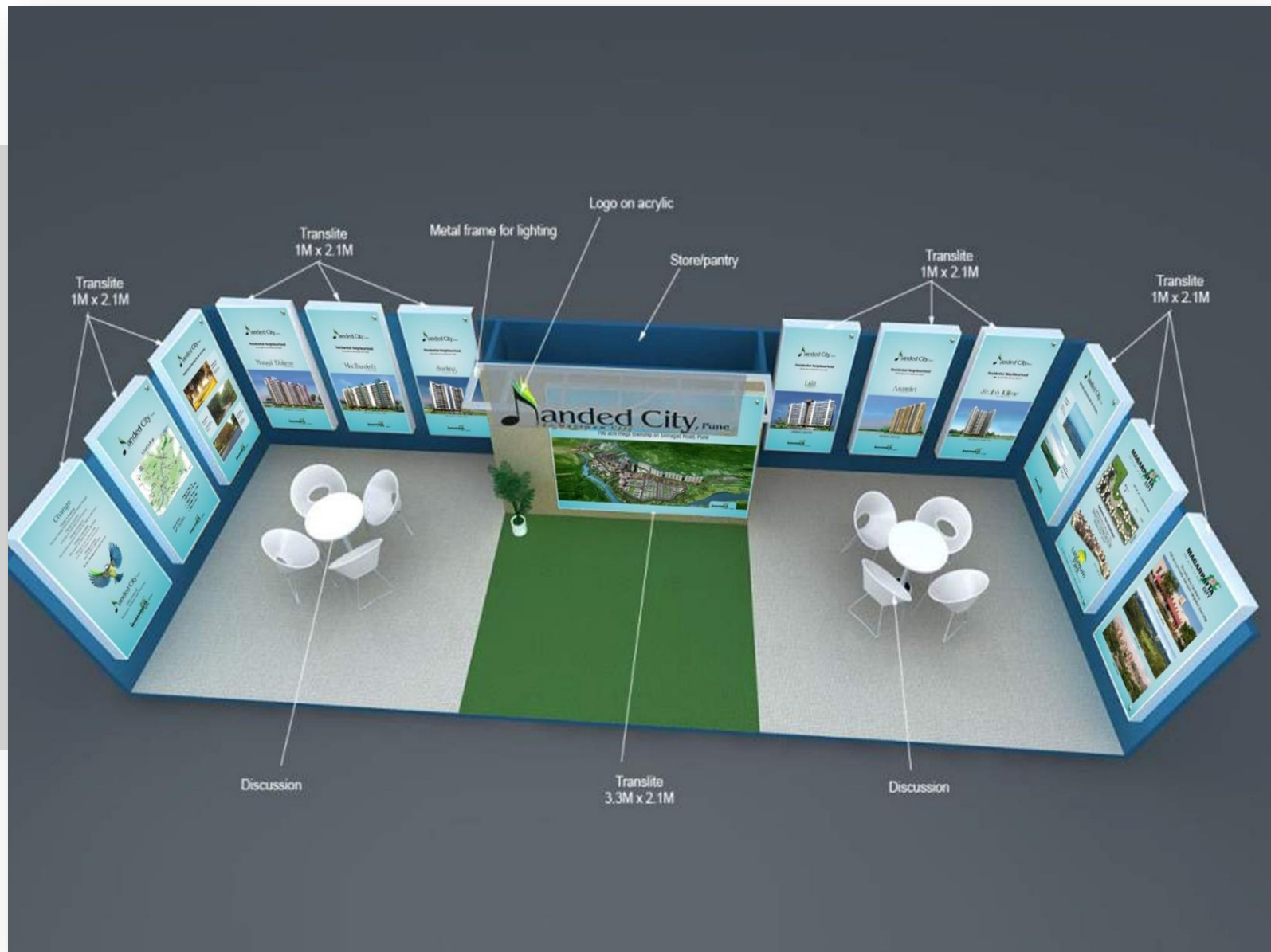
WebSite



Stall designs we created for our Real estate clients



Stall designs we created for our Real estate clients



Stall designs we created for our Real estate clients



Stall designs we created for our Real estate clients



Stall designs we created for our Real estate clients



Stall designs we created for our Real estate clients



thank you
feel free to call us



Venkatesh A – 8008556134
Venkatesh@tempestadvertising.com



copyrights 2017 tempest advertising pvt. Ltd.